



Scare The Boogey!

The Nightlight



PROJECT : Tanguy, Alexis and Lloyd





- **The journey**
- **The pitch**
- **The design**
- **The components**
- **The wiring**

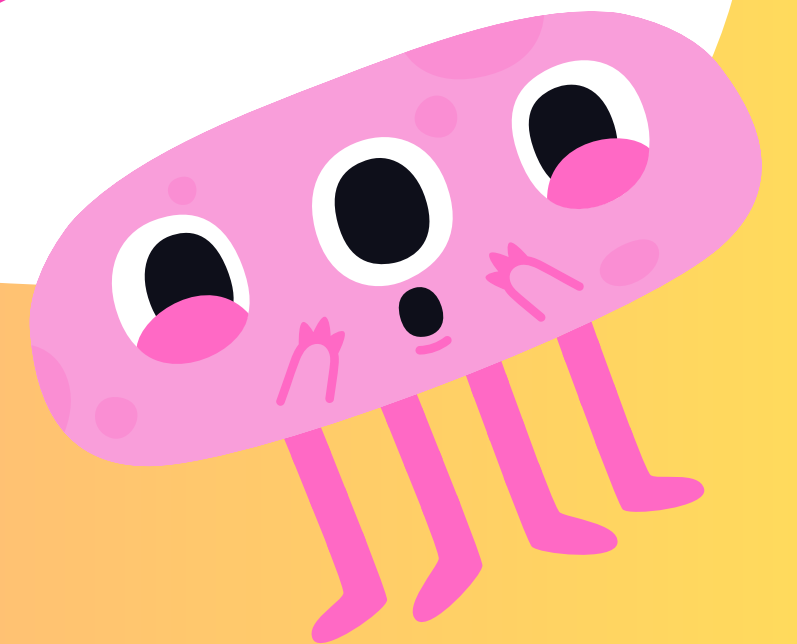


The journey

CANCELLED:
E.T's finger

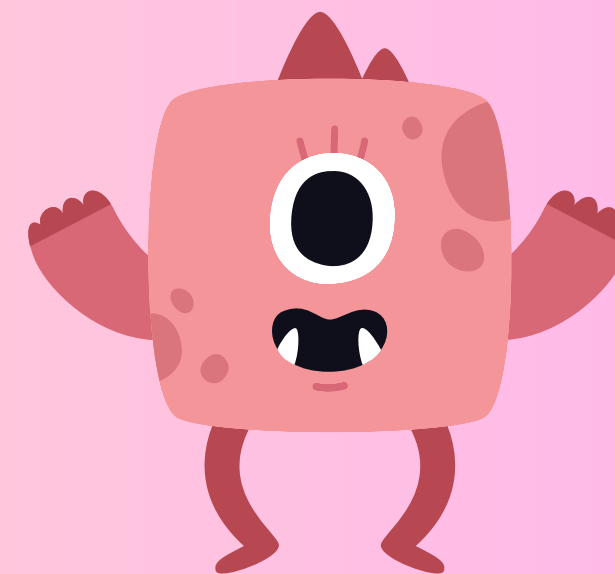
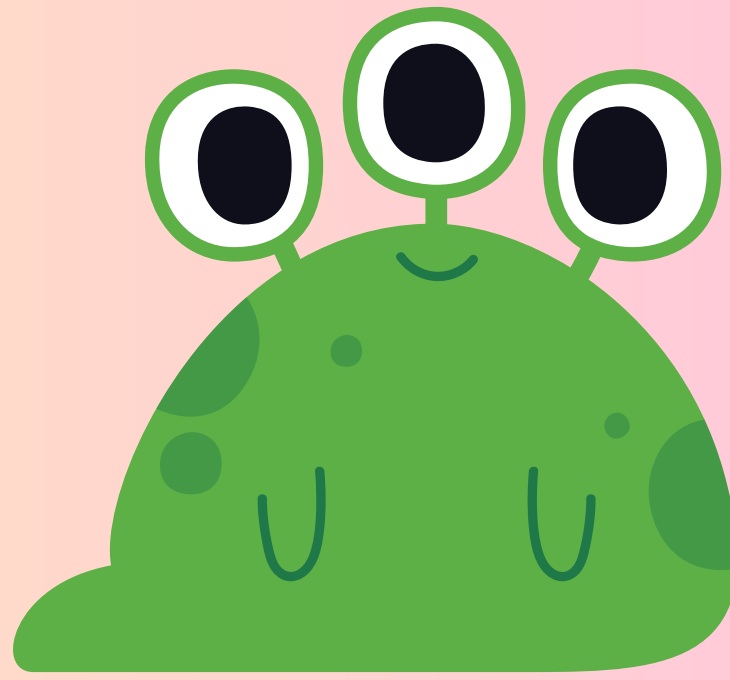
LED RELATED

CANCELLED:
Whack-A-Mole



The Pitch

Introducing "Scare the Boogey!" - a monster-inspired lamp with multiple eyes, designed to ward off bedtime fears. Let these friendly monsters light up your room and stand guard against the boogeyman, ensuring peaceful and serene adventures in the dream world!



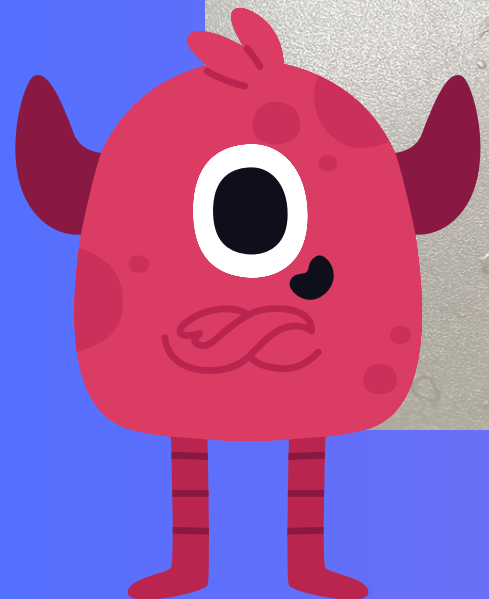
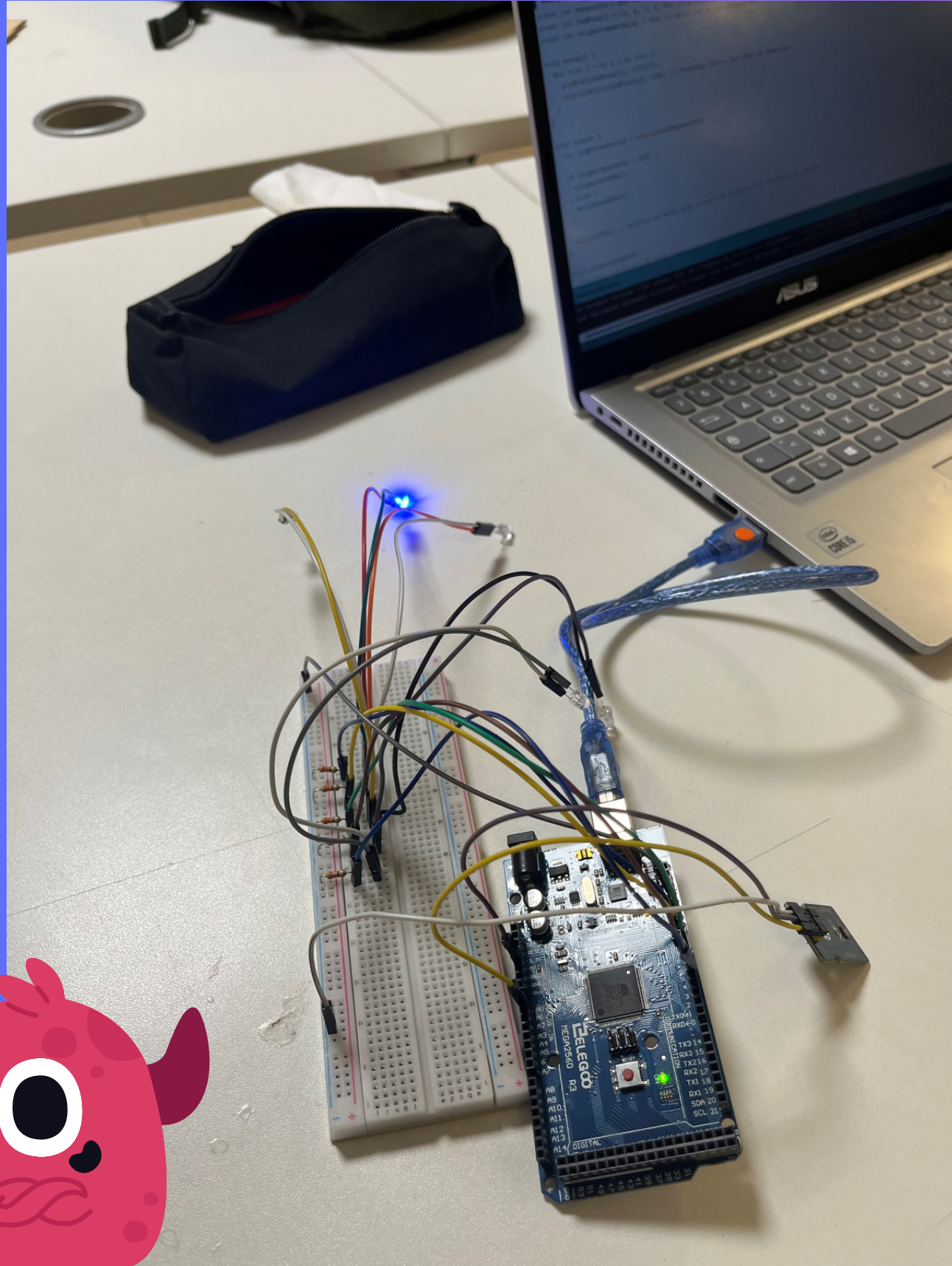
The design



That's it, this is the visual. Your soldiers.

The Components

- 1 arduino Mega
- 1 breadbord
 - 5 LEDs
 - 5 Resistors
 - A light sensor
 - A wireless module
- About 20 connecting cables





The wiring and behavior

- LEDs plugged from pin 5 to 9
- Light sensor plugged in pin A0
- Lights turn on when the ambient light level falls under a predefined darkness threshold





**Alright, time to say goodbye now.
The dream world awaits you !**